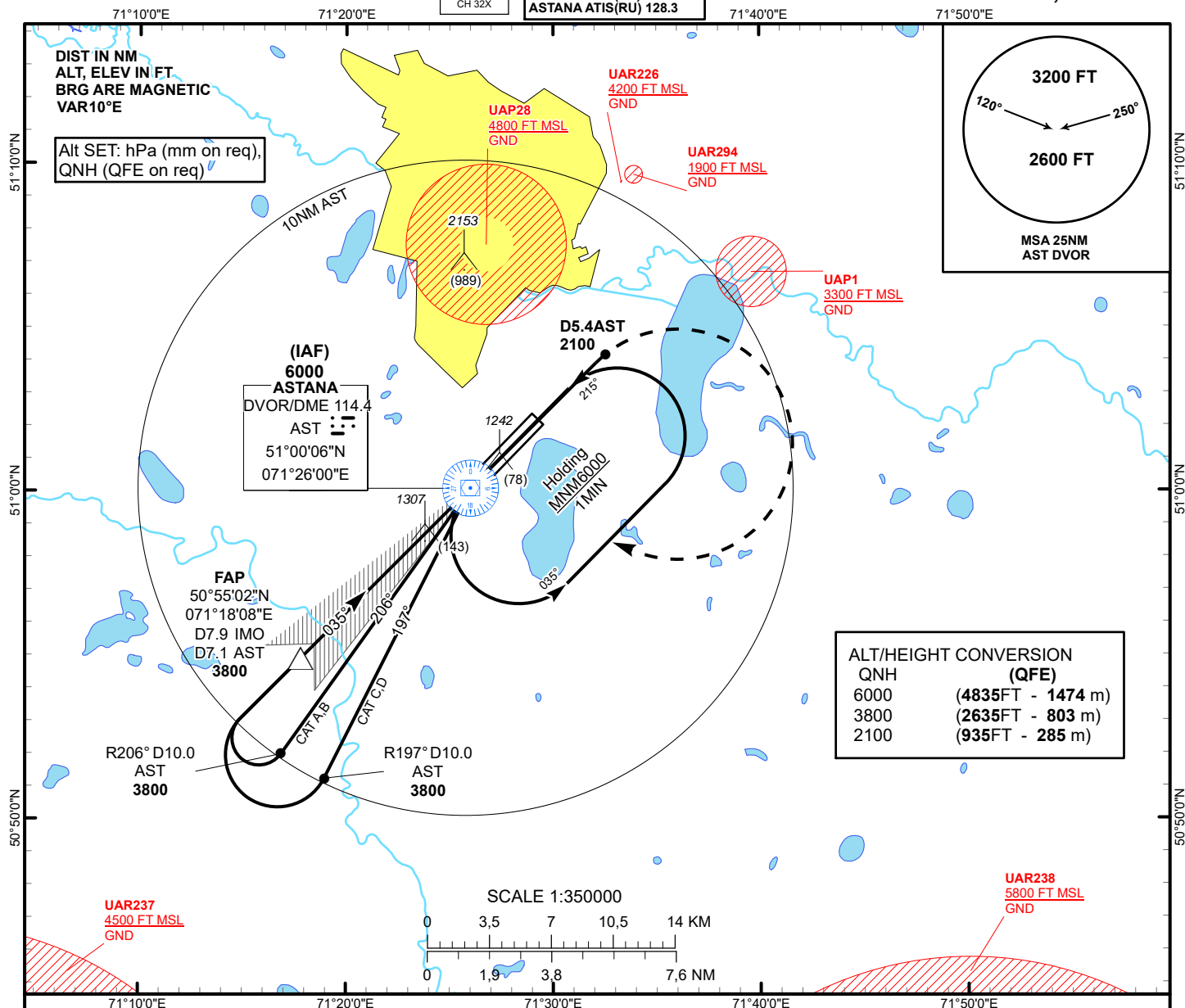


INSTRUMENT  
APPROACH  
CHART - ICAOAERODROME ELEV **1166FT**  
HEIGHTS RELATED TO  
THR RWY 04 - ELEV **1165FT**ILS  
LLZ 109.5  
IMO  
GP 332.6  
CH 32XASTANA TOWER 135.5  
ASTANA APPROACH 124.6  
ASTANA RADAR 120.7  
ASTANA GROUND 119.6  
ASTANA ATIS(EN) 129.5  
ASTANA ATIS(RU) 128.3ASTANA/NURSULTAN NAZARBAYEV  
INTERNATIONAL AIRPORT  
ILS/DME Z CAT II, III RWY 04TRANSITION ALT  
10000FAP  
D7.9 IMO  
D7.1 ASTIAF  
6000

## MISSED APPROACH

Climb on track 035° to 2100 or above  
outbound to D5.4 AST, turn RIGHT  
to AST. Climb initially to 3800  
then as directed by ATC.  
**RADIO FAILURE:** in case  
of RCF climb to 6000 to AST and join  
to holding pattern. Missed approach  
turn speed limited to 240 kt IAS maximum.

DVOR/DME  
ASTGP 3.0°  
035°

035°

ILS RDH 54  
ELEV 1165  
THR RWY 04

CHANGE: Tower FREQ, MSA.

Aircraft Category		A	B	C	D	THR - DME IMO	7.9	7.0	6.0	5.0	4.0	3.0	2.0	1.0
Straight-in Approach OCA/H	CAT I	1365(200)	1365(200)	1365(200)	1365(200)	DME AST	7.1	6.2	5.2	4.2	3.2	2.2	1.2	0.2
	CAT II	1265(100)	1265(100)	1265(100)	1265(100)	ALTITUDE	3800	3491	3161	2833	2506	2182	1859	1538
	CAT III	CAT III approved				HEIGHT	2635	2326	1996	1668	1341	1017	694	373
DME IMO ZERO RANGED TO THR RWY 04														
Aerodrome Operating Minima DH ft x RVR(CMV)	CAT I													
	CAT II													
	CAT III					GS		Kt	80	100	120	140	160	180
						Rate of descent		ft/min	420	530	630	740	840	950

ASTANA  
ILS/DME Z CAT II, III

AERONAUTICAL DATA TABULATION

ILS approach to RWY04 from AST VOR/DME	
Fix/point	Coordinates
AST DVOR/DME	51° 00' 05.6"N 071° 26' 00.4"E
IMO D7.9 AST D7.1 (FAP)	50° 55' 01.6"N 071° 18' 08.2"E
THR RWY 04	51° 00' 40.87"N 071° 26' 55.41"E
IMO LOC	51° 02' 24.7"N 071° 29' 37.4"E